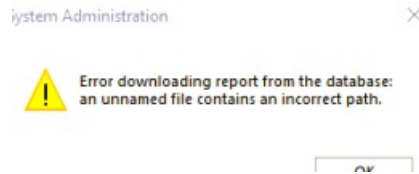


# When running a report, error message states "an unnamed file contains an incorrect path."

Last Modified on 10/06/2022 4:16 am EDT

**Symptom:** Error Downloading report from the database: an unnamed file contains an incorrect path.



**Cause:** When trying to preview or print any report in System Administration the error would come up

**Resolution:** Found the ISO location and went to the crystal file location /windows/temp and reinstalled Crystal Reports.

**Applies To:** OG 7.4.457.468 (update 3) and up

**Additional Information:** Made sure ODBC was connected to server and got a successful connection. Made sure Configuration Editor had the proper information in it and was using Lenel user instead of windows authentication.

Created a test report and selected one of the premade .rpt files and replicated that reports types, tried to preview it and still saw the error

Copyright © 2022 Carrier. All rights reserved.

---