

# Bosch panels do not come online in System Administration

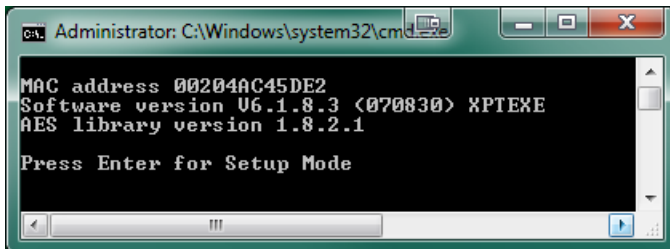
Last Modified on 10/06/2022 4:15 am EDT

Bosch panels do not come online in System Administration.

## Procedure Steps

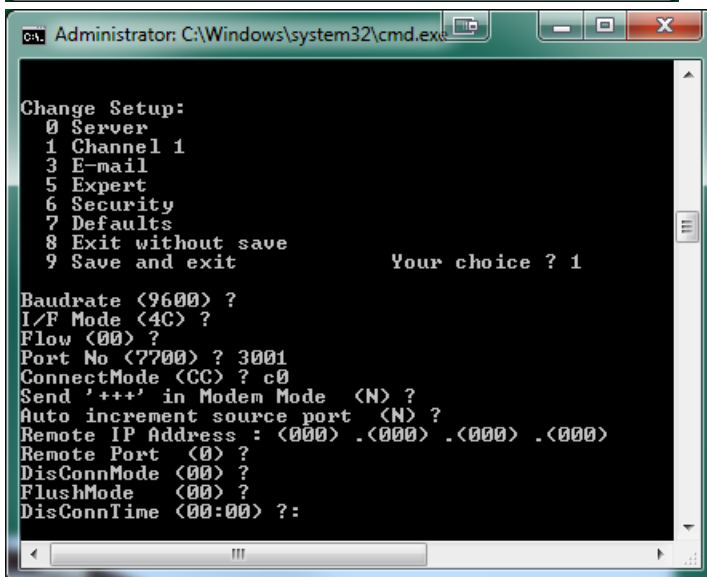
### If using Bosch DX4020 Ethernet Network Interface Module:

1. Telnet 192.168.200.155 1 (this should fail within 2 seconds).
2. Telnet 192.168.200.155 9999.
3. Press [Enter] to view telnet menu.
4. Press 1 for Channel 1 settings.
5. Settings should be set as follows:



```
C:\Windows\system32\cmd.exe
MAC address 00204AC45DE2
Software version U6.1.8.3 (070830) XPIEXE
AES library version 1.8.2.1

Press Enter for Setup Mode
```

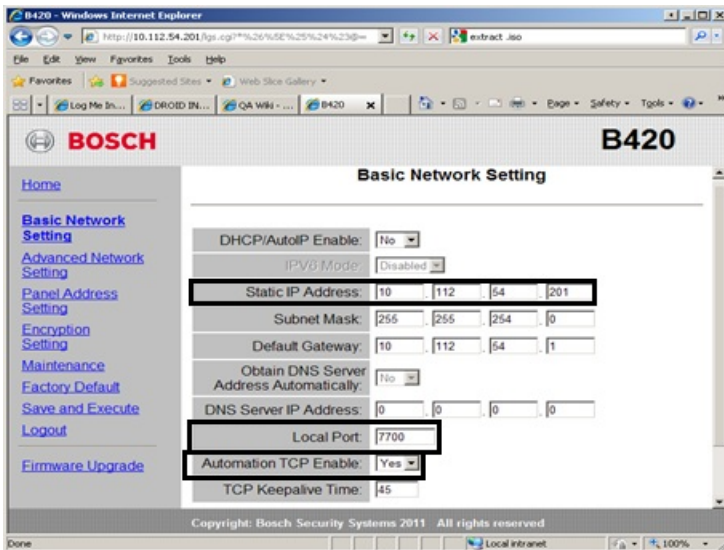


```
C:\Windows\system32\cmd.exe
Change Setup:
0 Server
1 Channel 1
3 E-mail
5 Expert
6 Security
7 Defaults
8 Exit without save
9 Save and exit          Your choice ? 1

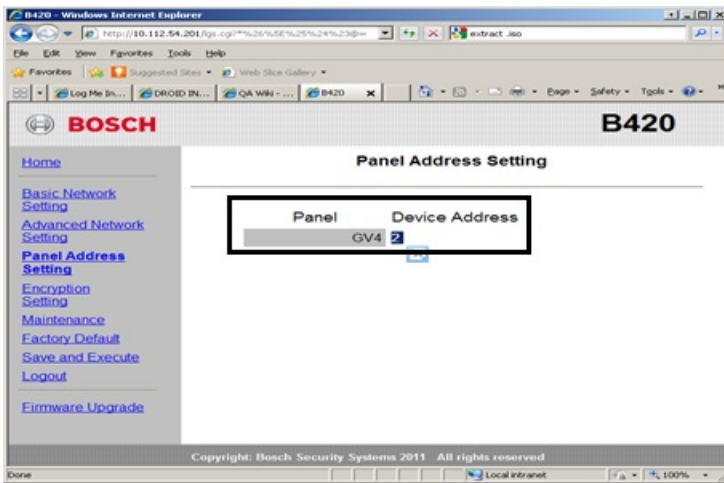
Baudrate (9600) ?
I/F Mode (4C) ?
Flow (00) ?
Port No (7700) ? 3001
ConnectMode (CC) ? c0
Send '+++ in Modem Mode (N) ?
Auto increment source port (N) ?
Remote IP Address : (000) .(000) .(000) .(000)
Remote Port (0) ?
DisConnMode (00) ?
FlushMode (00) ?
DisConnTime (00:00) ?:
```

### If using Bosch B420 Ethernet Communication Module:

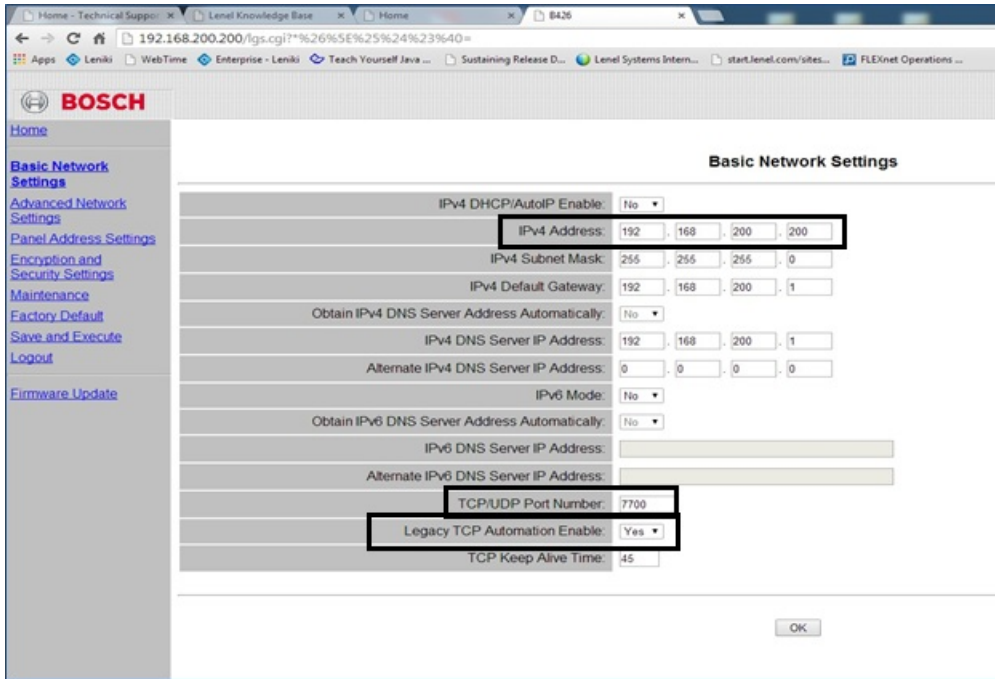
**Note:** Default password is “B42V2”.



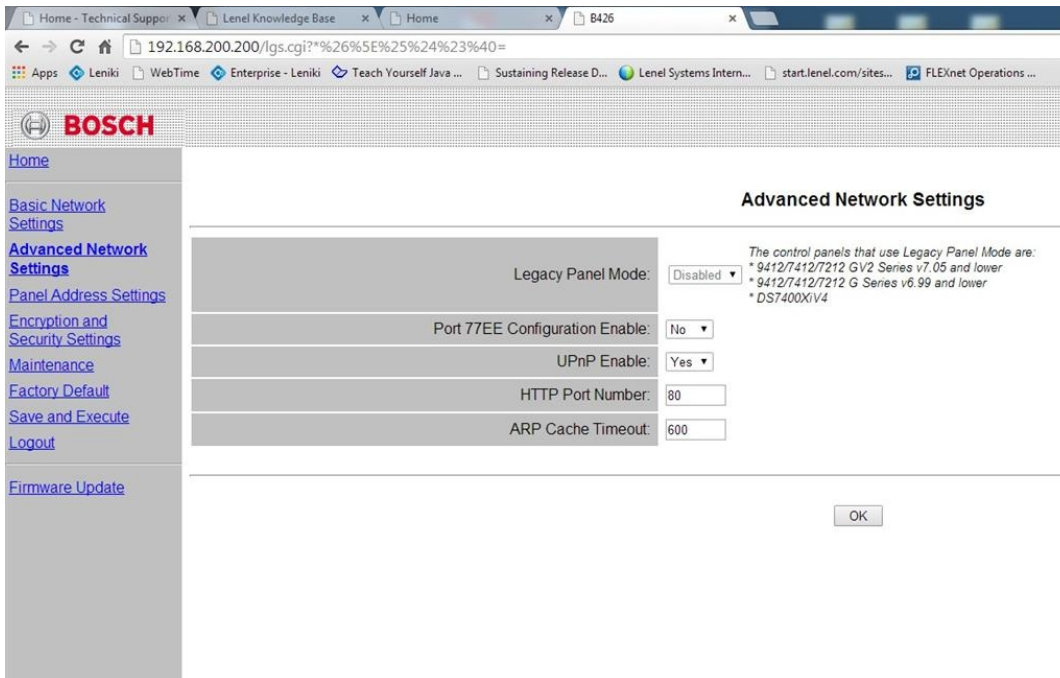
**Note:** Local Port and Static IP Address need to match settings in System Administration.

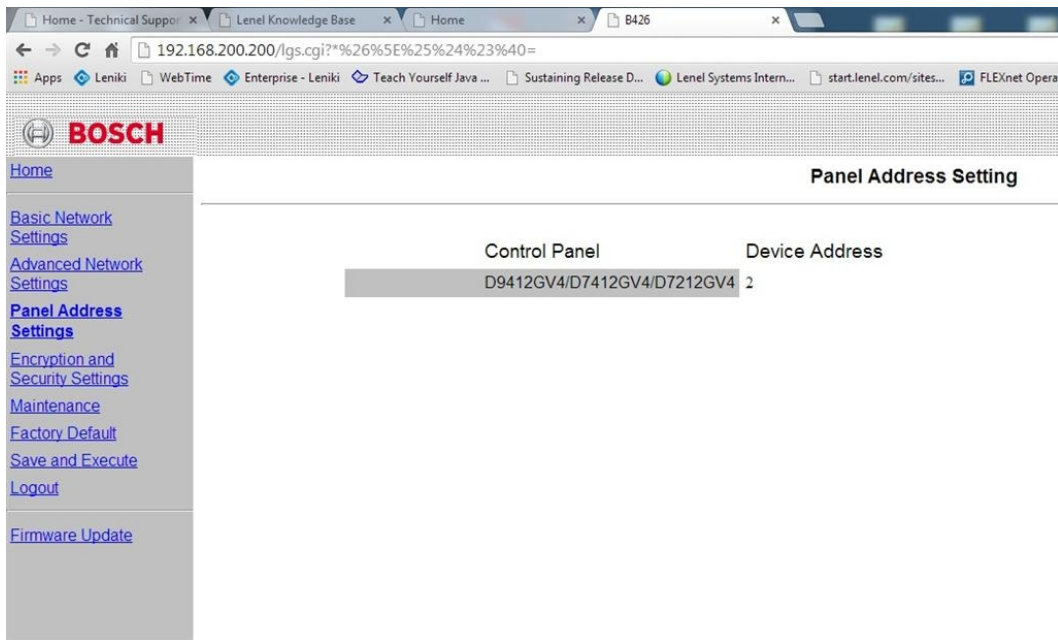


**If using the Bosch B426 Ethernet Communication Module:**



**Note:** TCP/UDP Port Number and IPv4 address need to match settings in System Administration.





**Notes:**

- The GV3-Series control panels and B426 are setup to use SDI1 (the only SDI port it has). The rotary switch should be at 3 for address 80 (automation) or 4 for address 88 (reporting or RPS). In System Administration, the panel was at address 3001 and when changed to 7700, the panel came online.
- To default the B426:
  1. Connect the B426 directly to a PC with the PC set for APIPA.
  2. Short the mode jumper on the B426 and set rotary switch to 9.
  3. Power cycle.
  4. Set the IP address of the computer to 169.254.1.2.
  5. Wait approximately 1 minute.
  6. Enter 169.254.1.1 in web browser URL.
  7. Login with default password **B42V2**.
- If needed, the B420 gets defaulted in the Web Configuration Page.
- The B-Series and GV4 V2+ series panels manage AES encryption, so in the D426 you must leave B426 Encryption disabled.
- B426 rotary switch settings:

SDI Bus connection	Switch position	Configured for	Protocol	HTTP Port #
n/a	9	Defaulting the device	n/a	n/a
SDI1 address 1	1	<b>RPS</b> Remote Programing Software	UDP	88

SDI1 address 1	3	Automation - <b>OnGuard</b>	TCP	80
SDI2 address 2	1 or 2	Automation - <b>OnGuard</b>	TCP	80

- B420 rotary switch settings:

- 

SDI Bus connection	Switch position	Configured for	Protocol	HTTP Port #
n/a	9	Defaulting the device	n/a	n/a
SDI1 address 1	1	<b>RPS</b> Remote Programing Software	UDP	88
SDI1 address 1	2	Automation - <b>OnGuard</b>	TCP	80
SDI2 address 2	2	Automation - <b>OnGuard</b>	TCP	80

## Applies To

Bosch Panel

## Additional Information